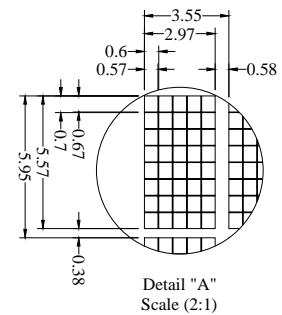
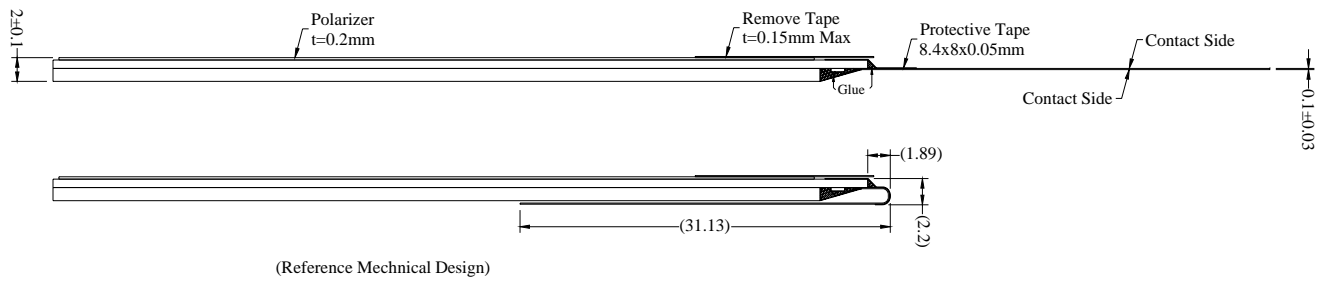


| Pin | Symbol    |
|-----|-----------|
| 1   | N.C.      |
| 2   | VSL       |
| 3   | VSS       |
| 4   | REGVDD    |
| 5   | SHLC      |
| 6   | SHLS      |
| 7   | VDD       |
| 8   | VDDIO     |
| 9   | BS0       |
| 10  | BS1       |
| 11  | BS2       |
| 12  | GPIO      |
| 13  | CS#       |
| 14  | RES#      |
| 15  | DC#       |
| 16  | R/W#(WR#) |
| 17  | E(RD#)    |
| 18  | D0        |
| 19  | D1        |
| 20  | D2        |
| 21  | D3        |
| 22  | D4        |
| 23  | D5        |
| 24  | D6        |
| 25  | D7        |
| 26  | IREF      |
| 27  | ROM0      |
| 28  | ROM1      |
| 29  | OPRO      |
| 30  | OPR1      |
| 31  | VCOMH     |
| 32  | VCC       |
| 33  | N.C.      |



**Notes:**

- Color: White
- Driver IC: US2066
- Interface:  
4-/8-bit 68XX/80XX Parallel, SPI, I2C
- General Tolerance: ±0.30
- The total thickness (2.10 Max) is without polarizer protective film & remove tape.  
The actual assembled total thickness with above materials should be 2.35 Max.

| CUSTOMER APVL                  | CUSTOMER | DATE       | TITLE |
|--------------------------------|----------|------------|-------|
| DRAWN                          | SCALE    | MI1602A0-W |       |
| DFTG CHK                       | UNIT     | MODEL      |       |
| ENGR CHK                       | mm       | DWG NO     |       |
| APPROVAL                       |          | PAGE       |       |
| MULTI-INNO TECHNOLOGY CO.,LTD. |          |            | 1/1   |